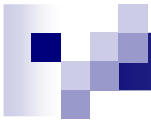




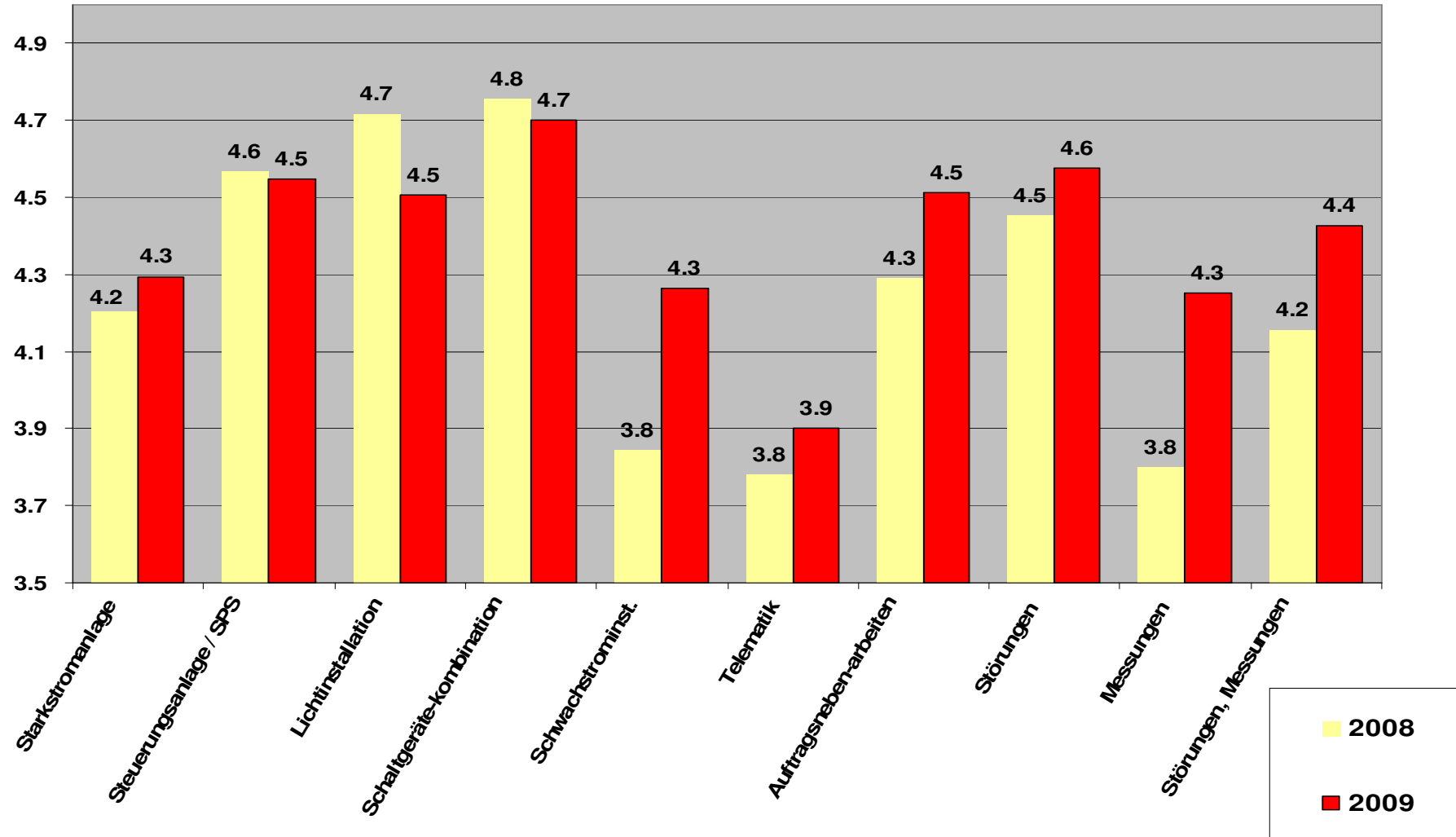
# Auswertung LAP 2009

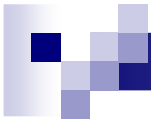
**Elektromonteure**



# Elektromonteuere TG

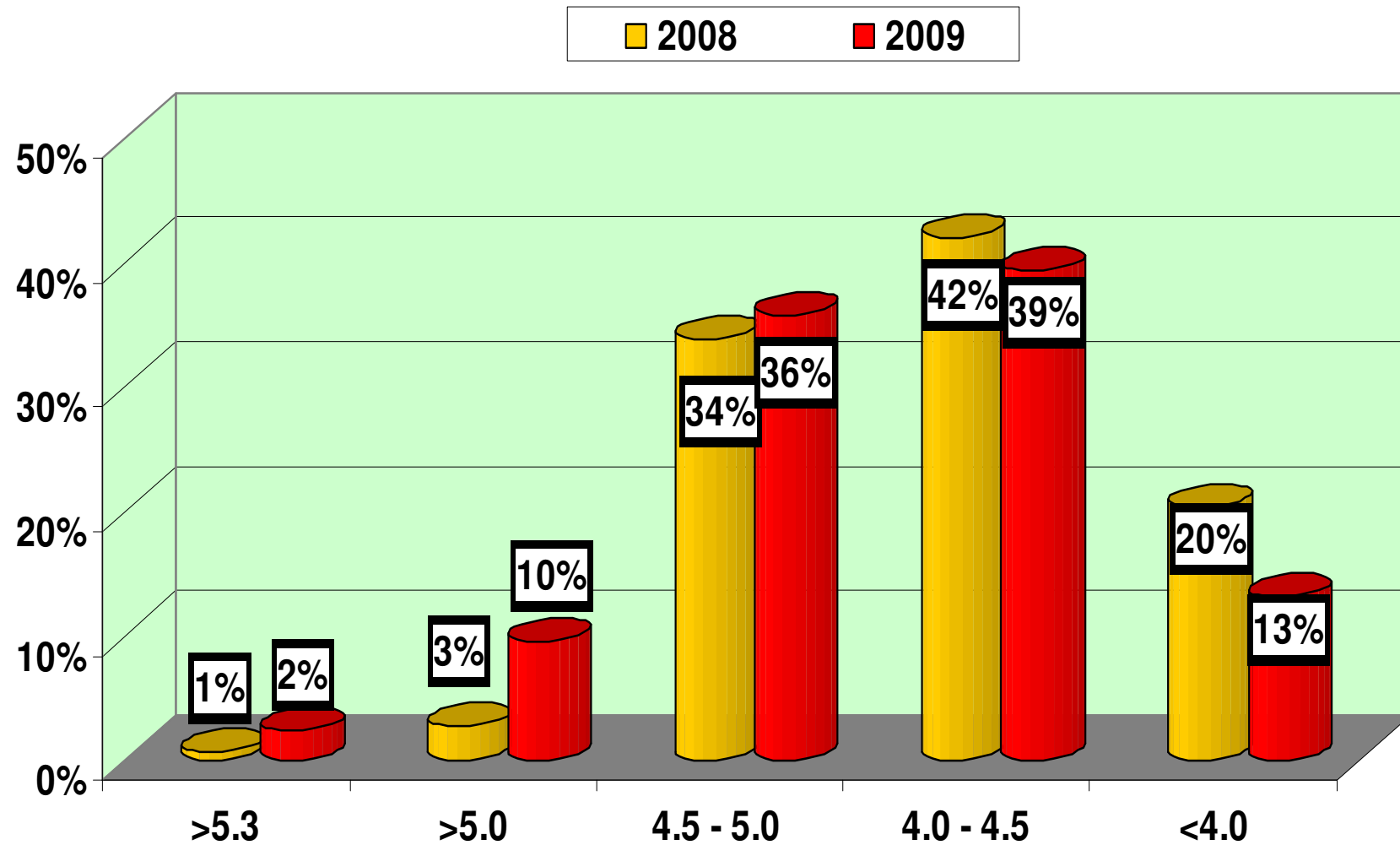
# Praktische Arbeiten 2008 / 2009

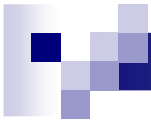




## Elektromonteure TG

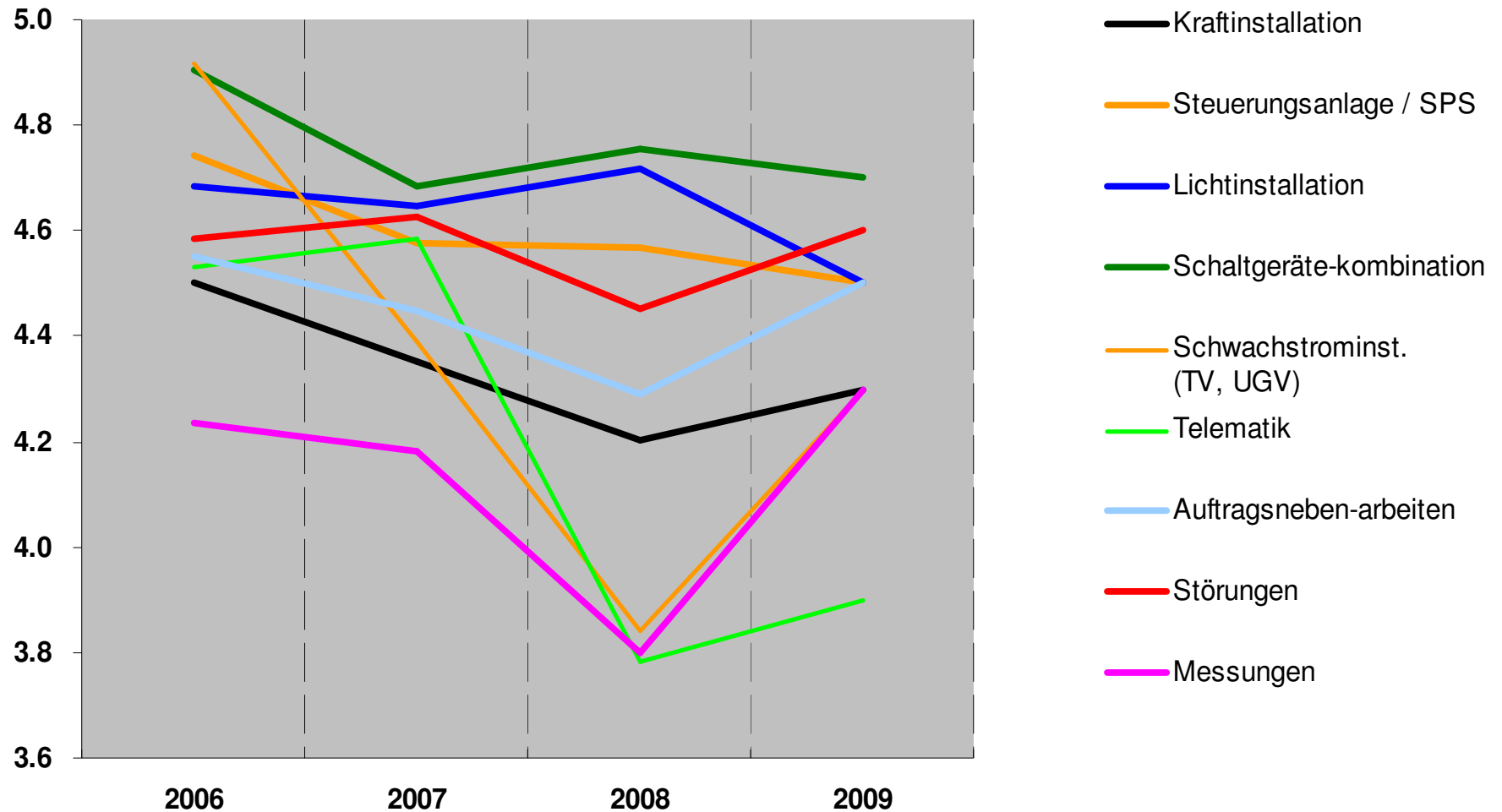
## Zusammensetzung der Praktischen Noten

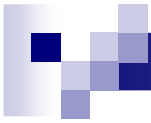




## Elektromonteuere TG

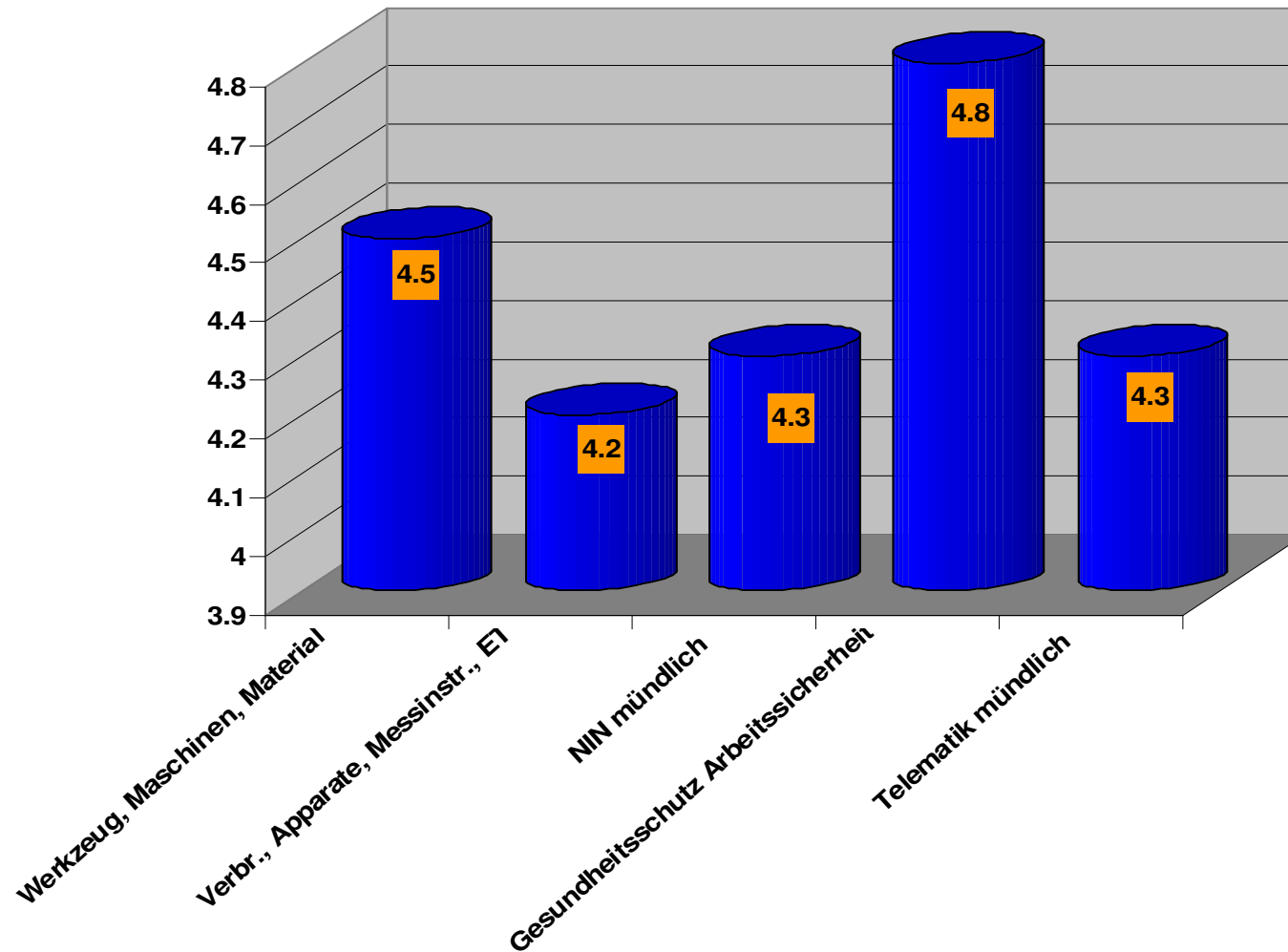
## Praktische Arbeiten 2006 bis 2009

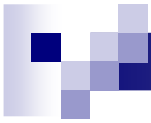




## Elektromonteure TG

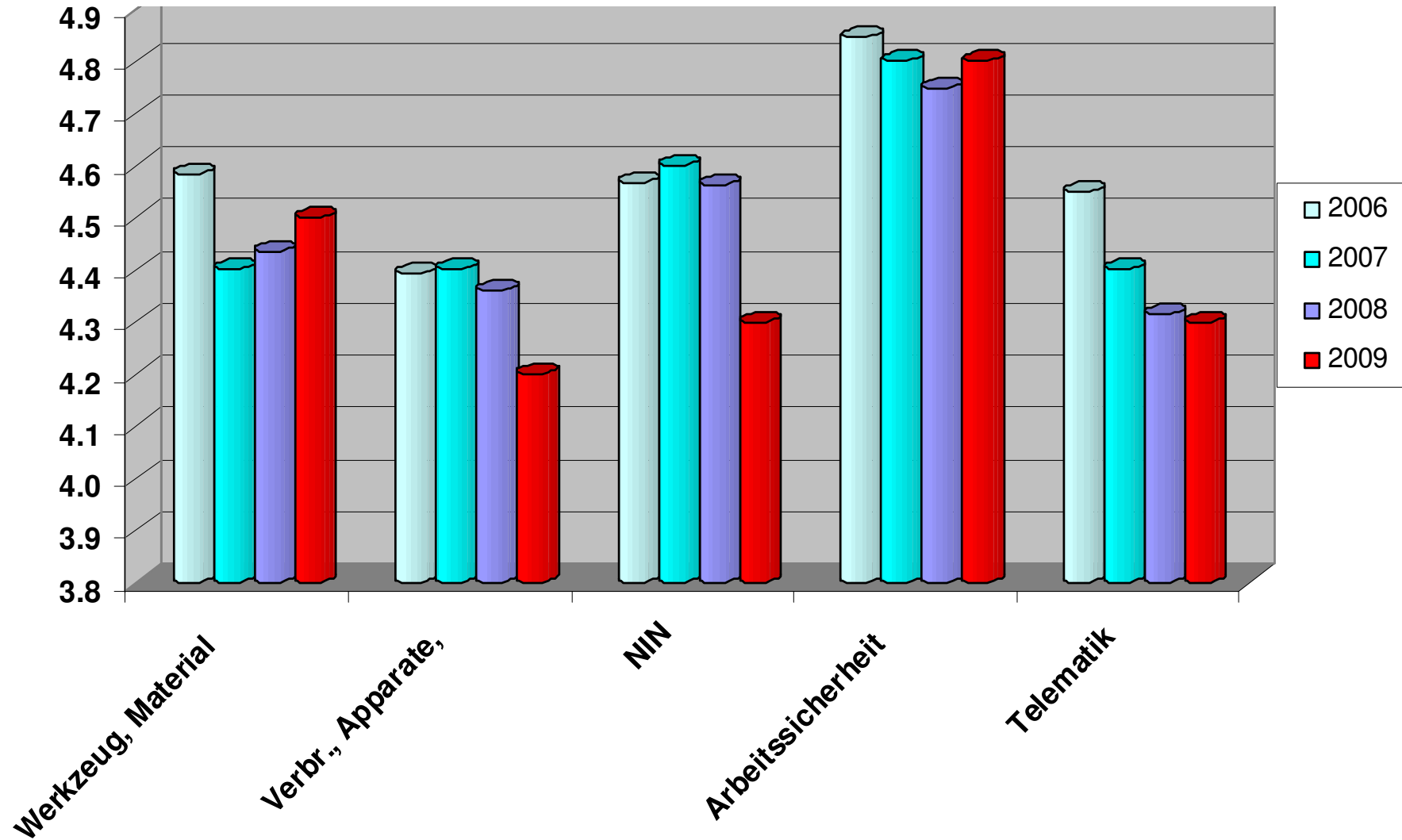
## Berufskunde mündlich

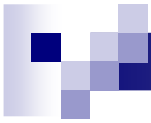




## Elektromonteuere TG

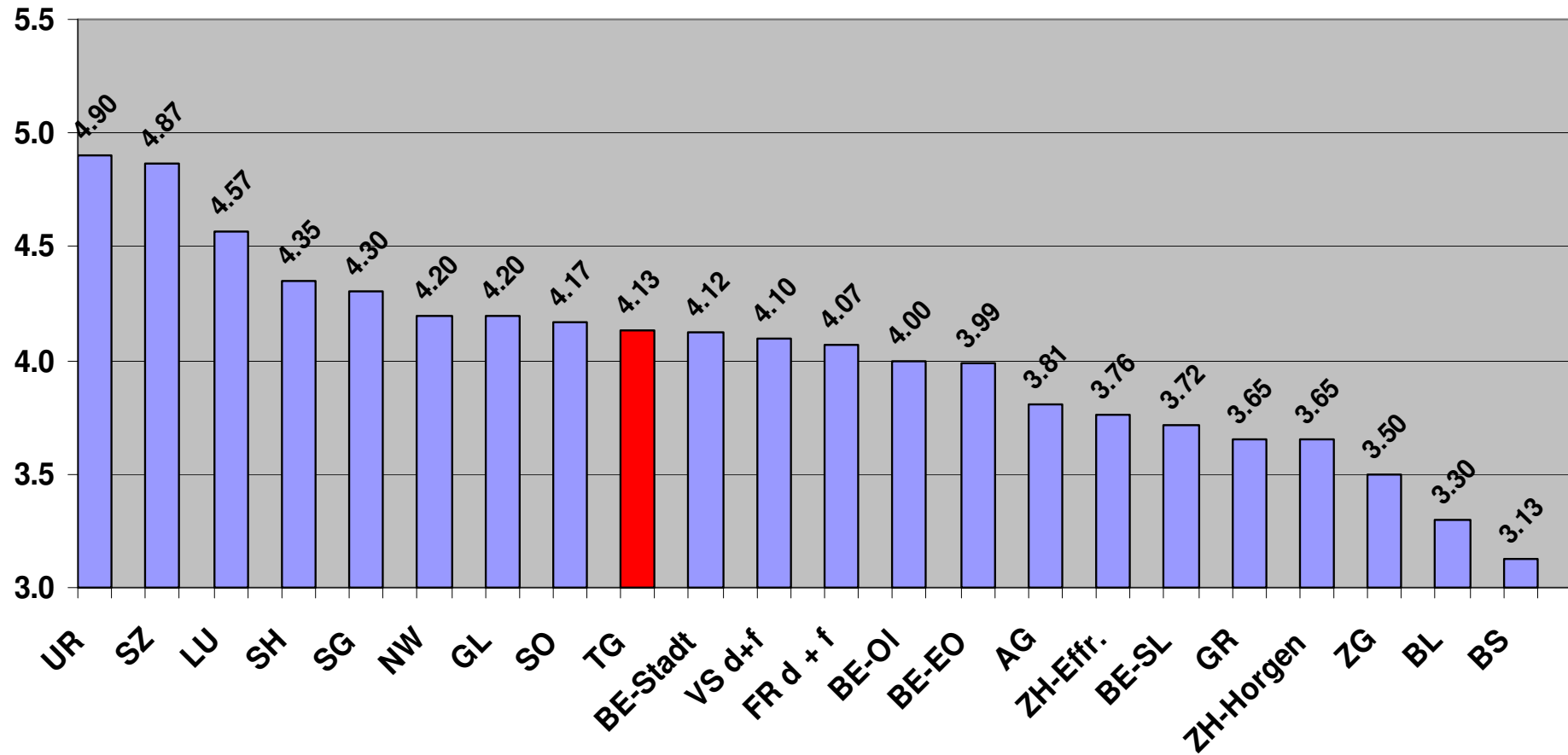
## Berufskunde mündlich 2006 - 2009

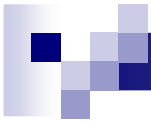




# Elektromonteure 2009

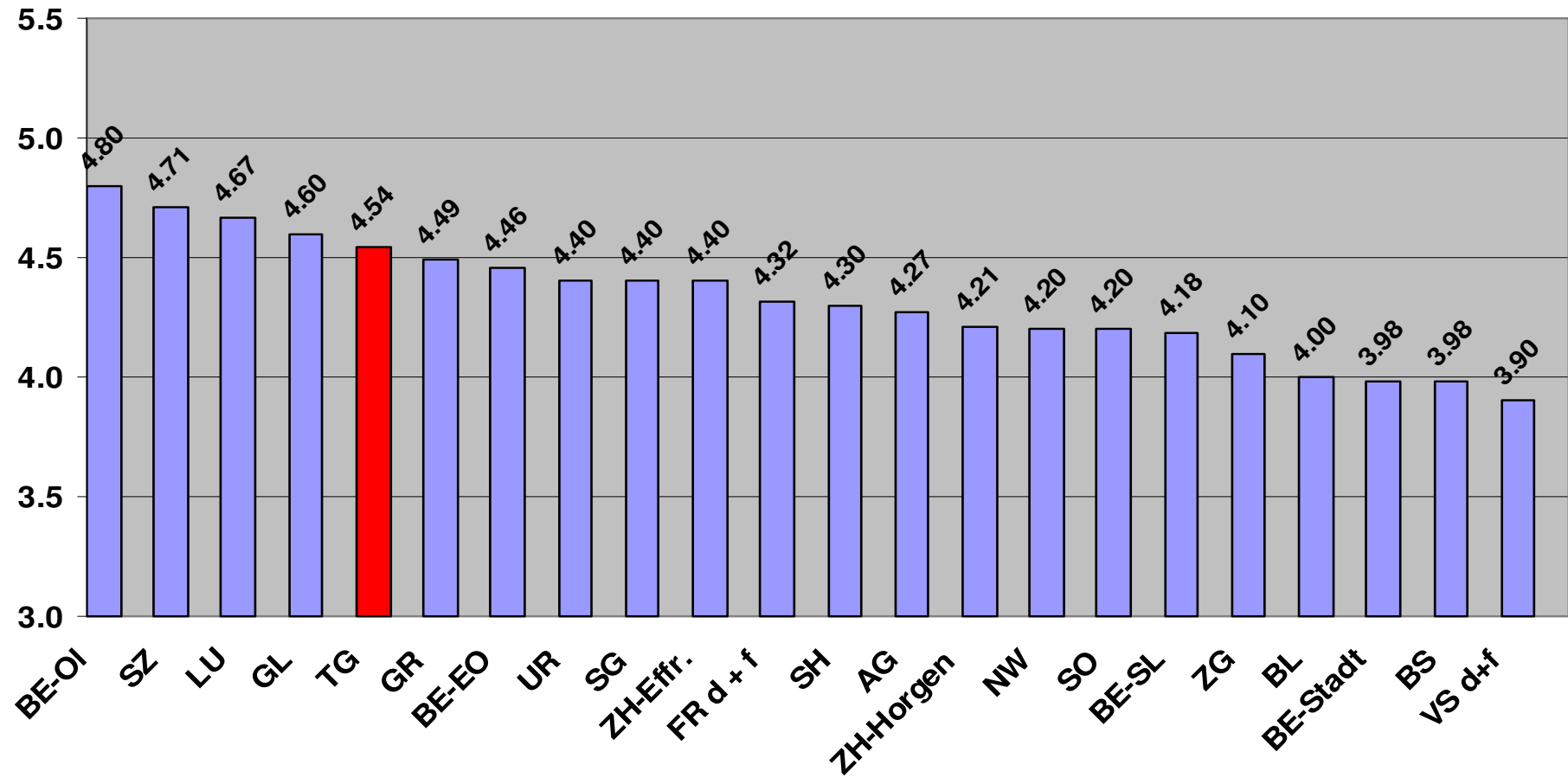
# Elektrotechnik schriftlich

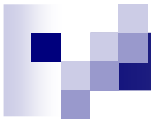




# Elektromonteuere 2009

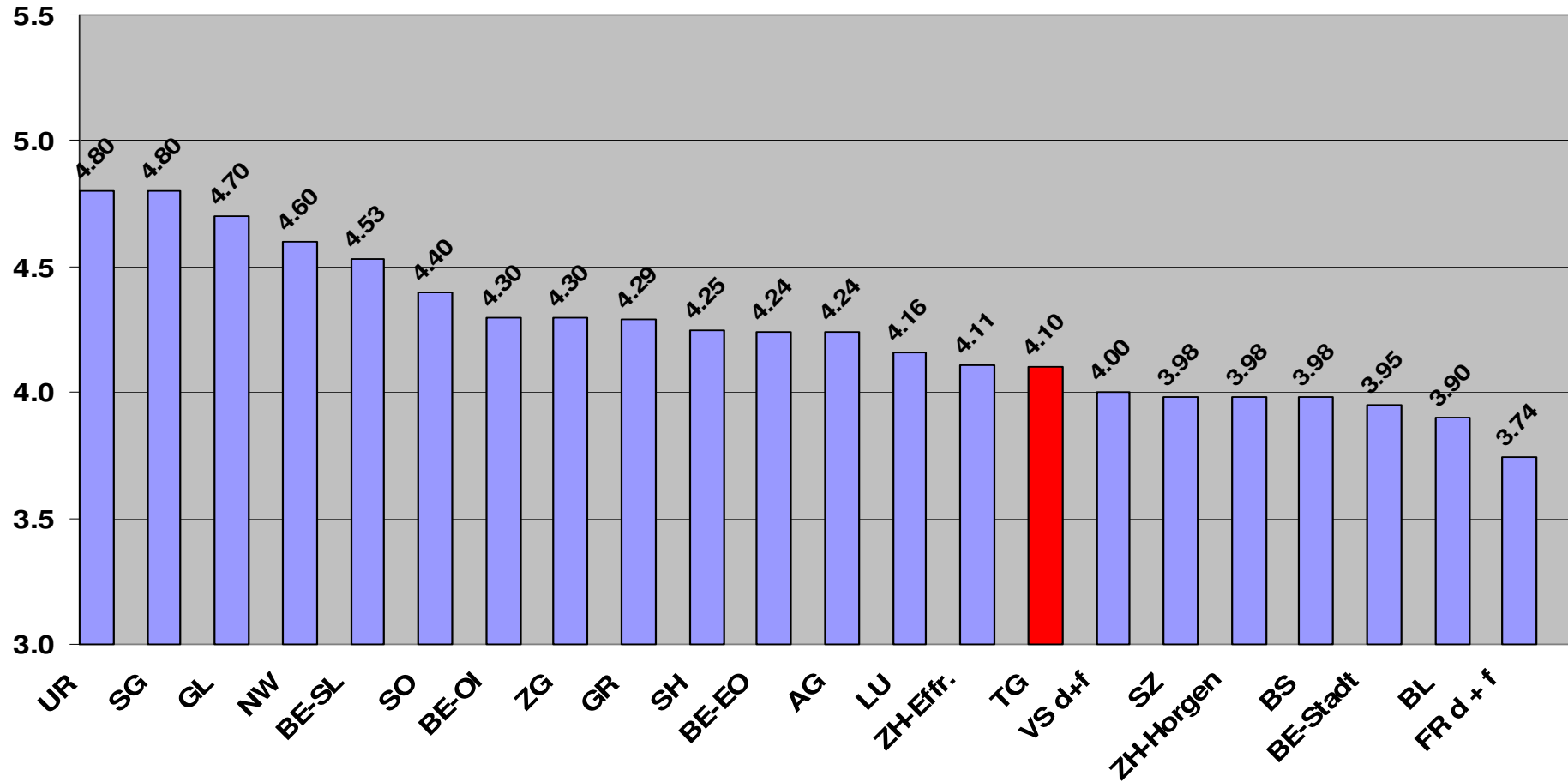
# Normen Installationskunde

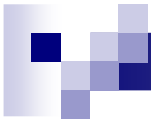




# Elektromonteuere 2009

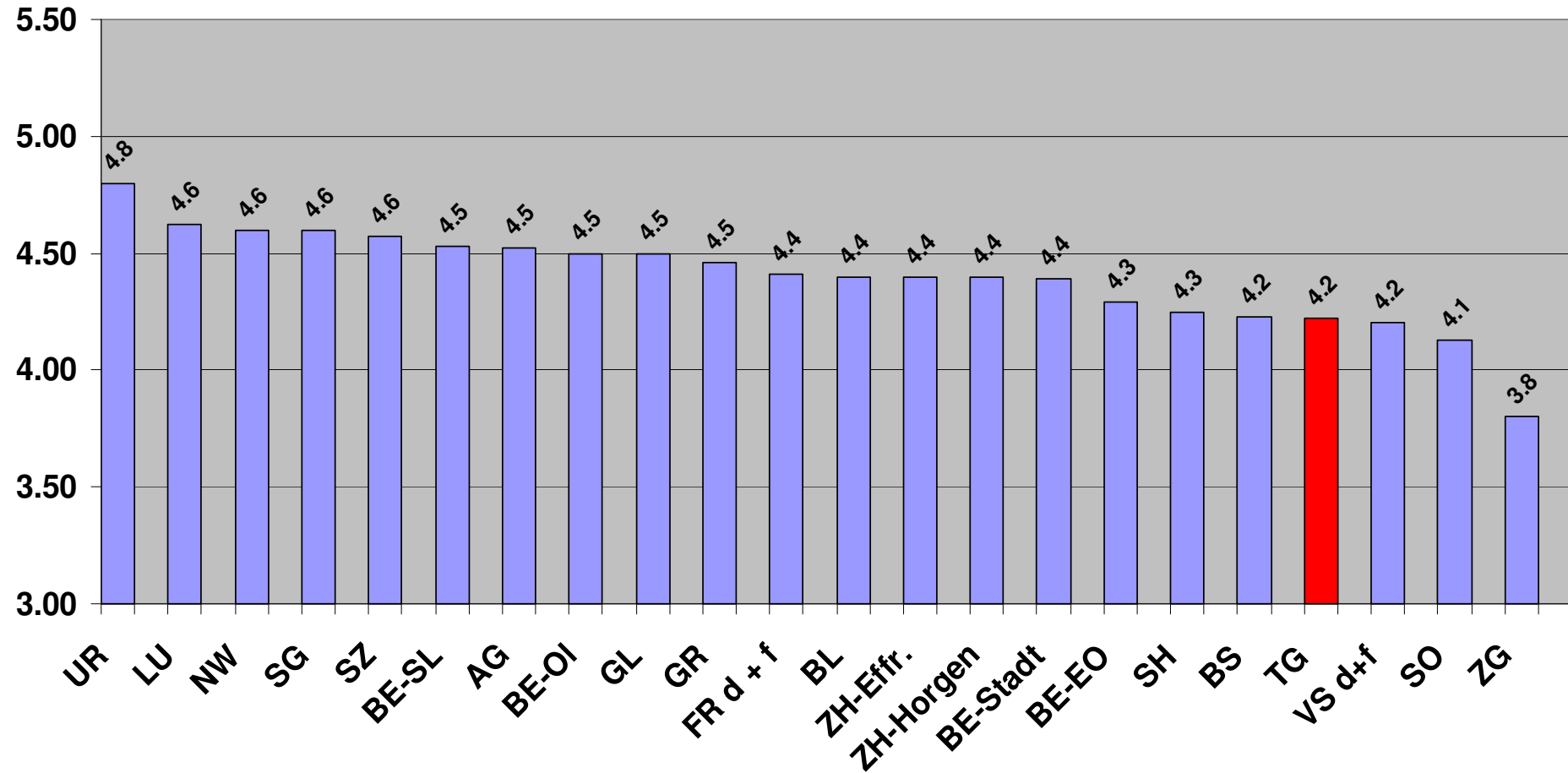
# Schemazeichnen

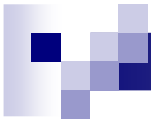




# Elektromonteuere 2009

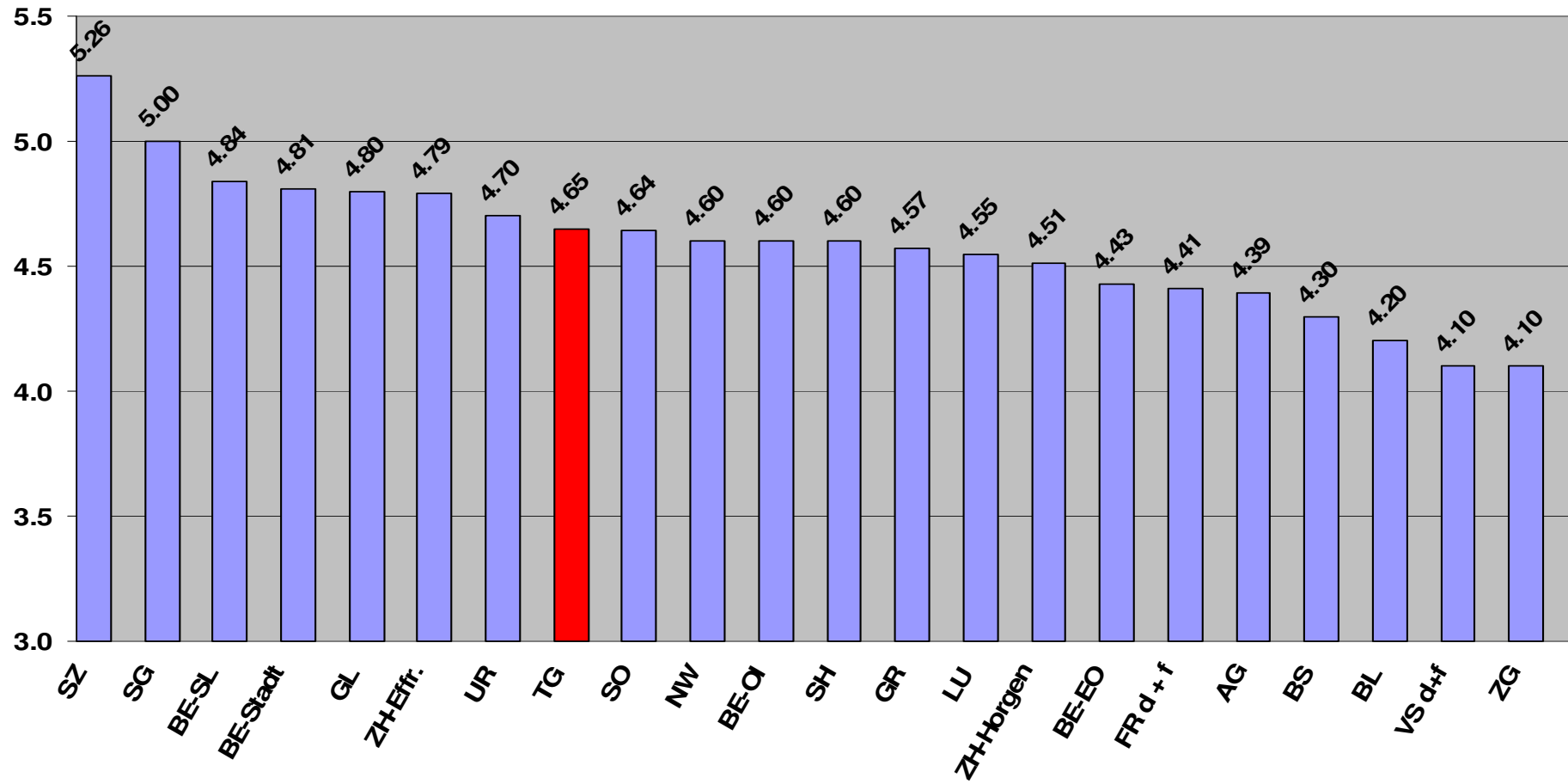
# Installationsplan

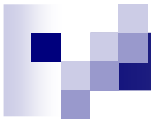




# Elektromonteuere 2009

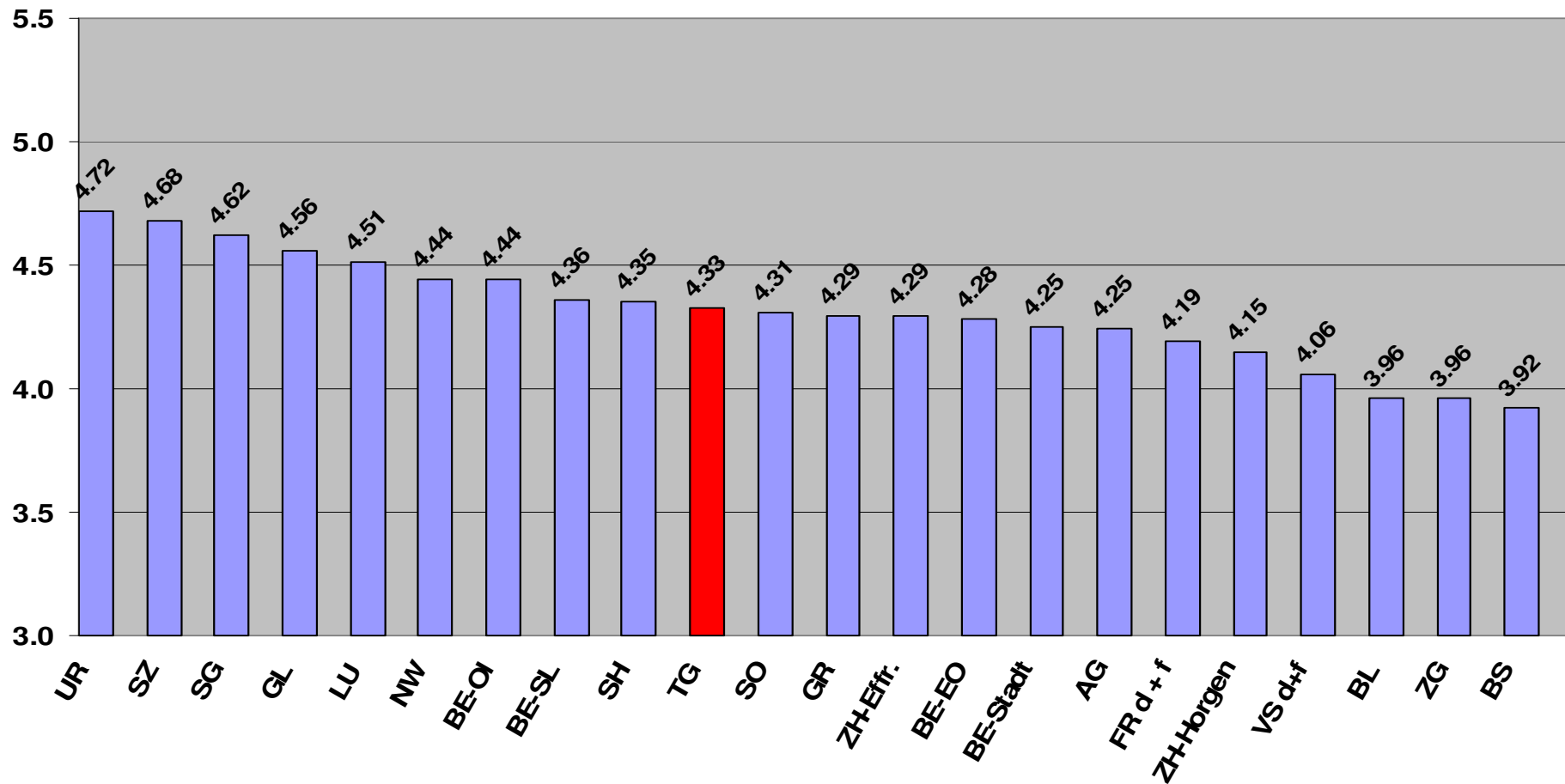
# Telematik

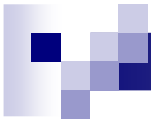




# Elektromonteuere CH 2009

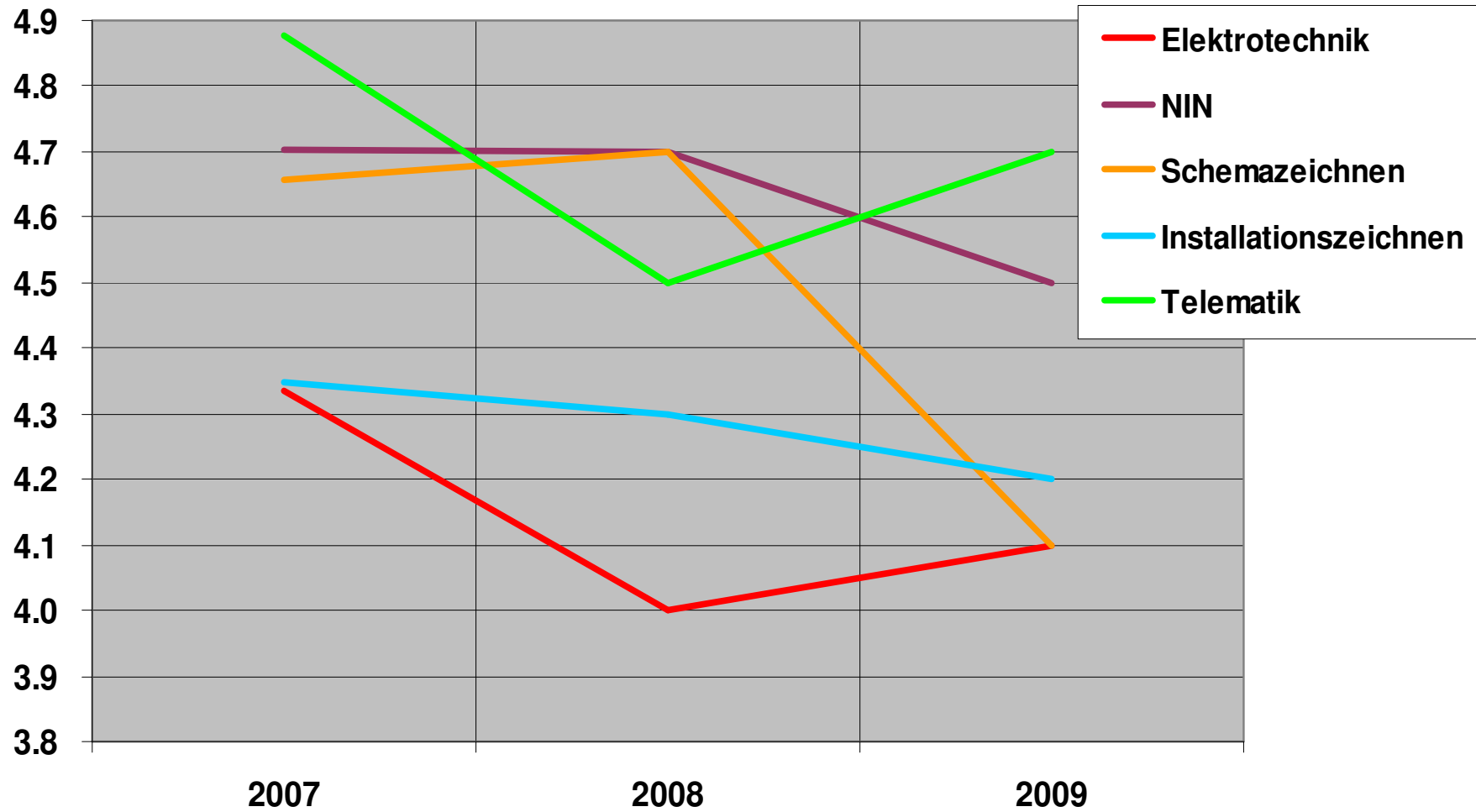
# Gesamtnote Berufskunde

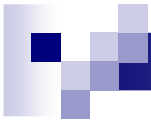




## Elektromonteure TG

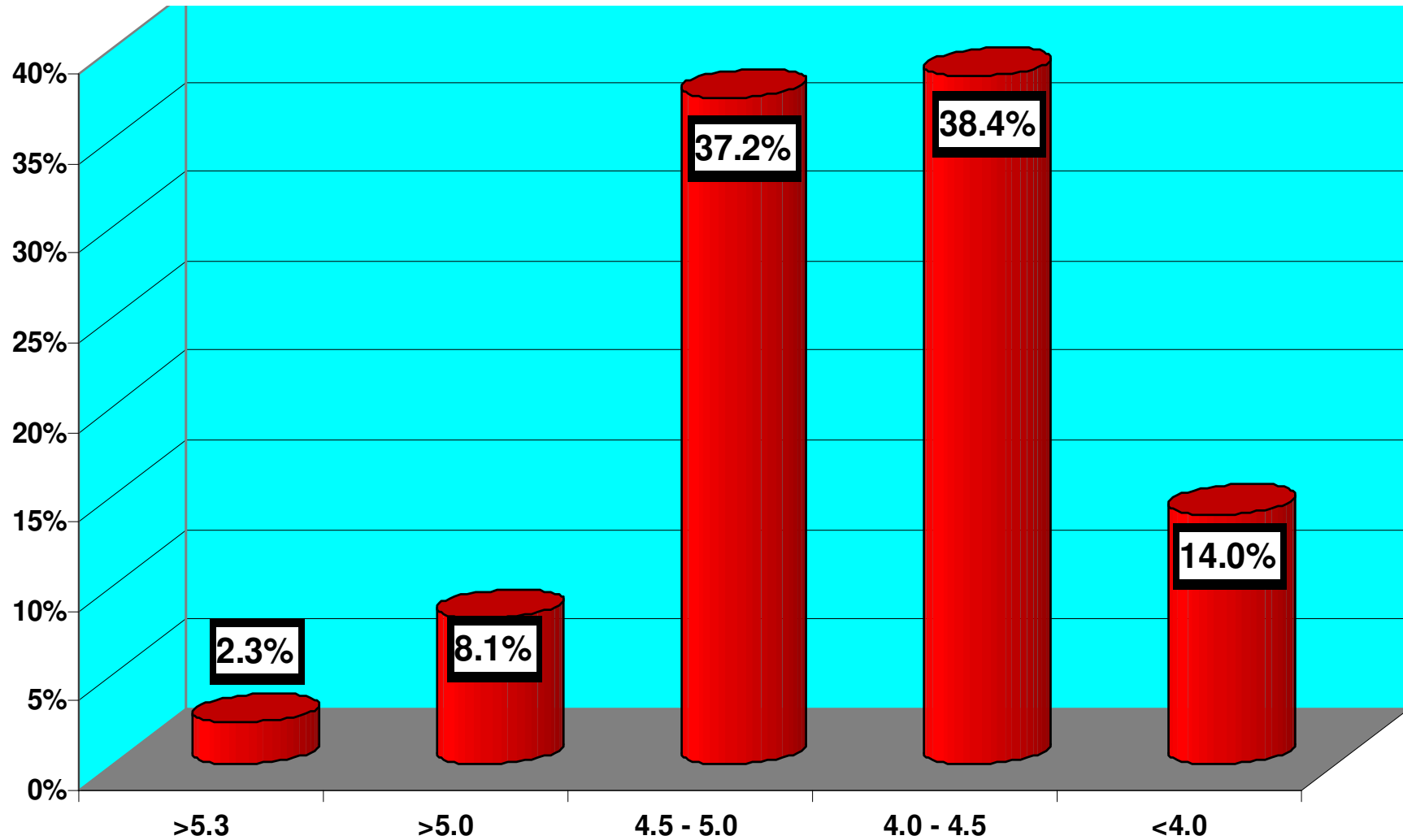
## Prüfungsvergleich schriftlich 2007 - 2009

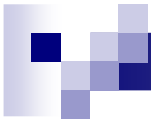




## Elektromonteure TG

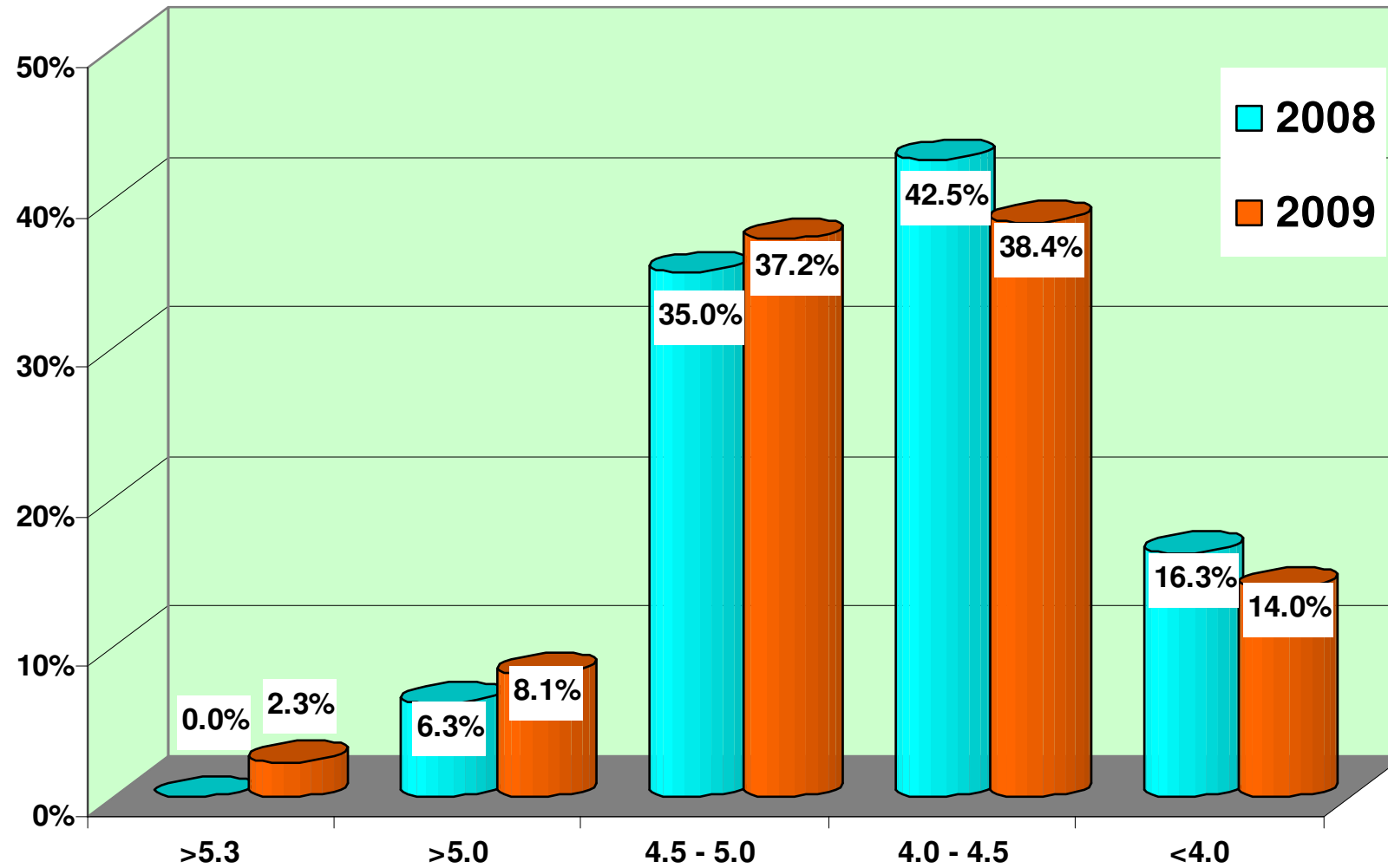
## Zusammensetzung der Gesamtnote 2009





# Elektromonteure TG

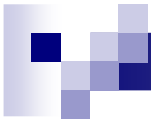
# Gesamtnotenvergleich 2008 - 2009





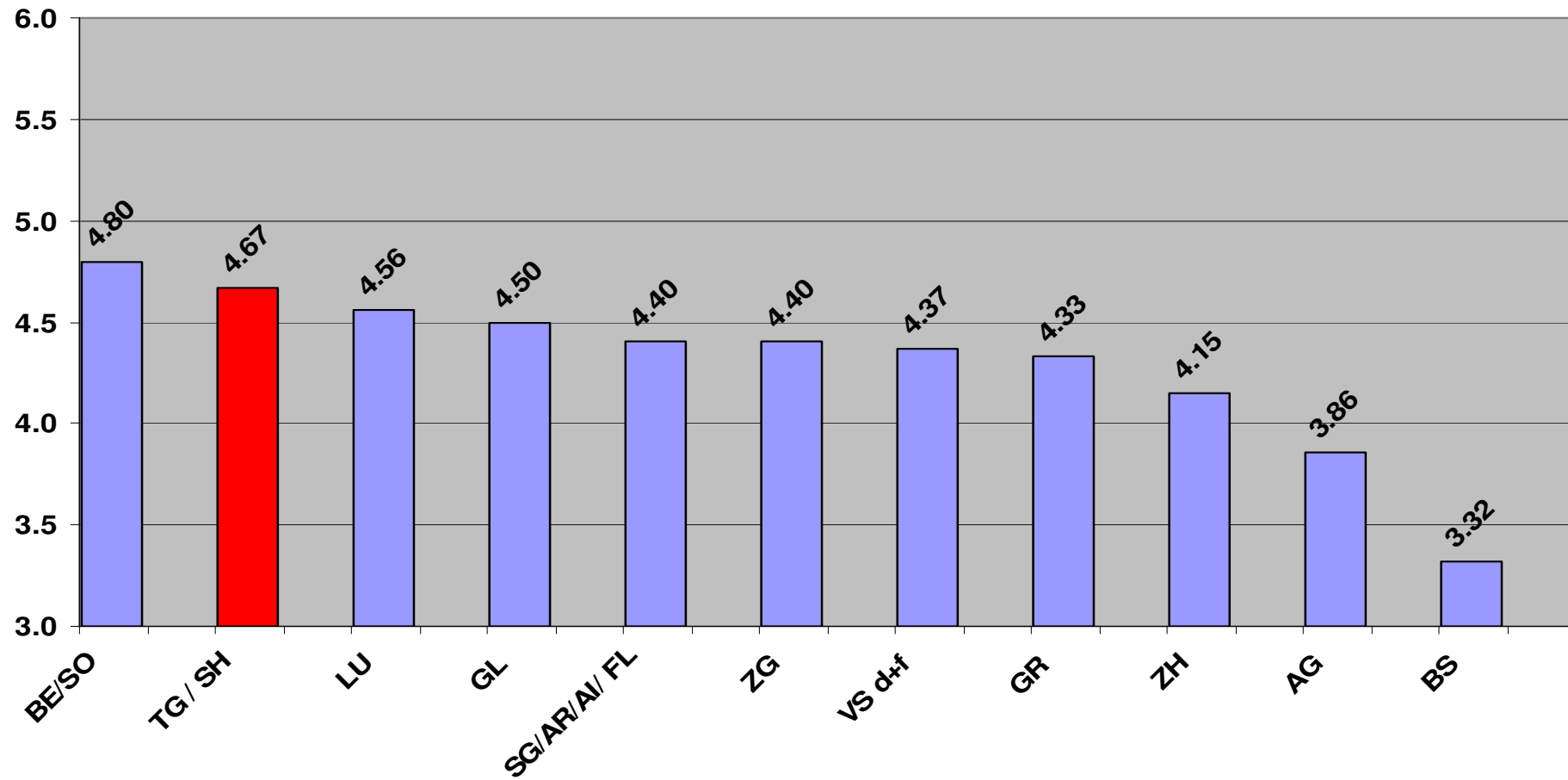
# Auswertung LAP 2009

**Montageelektriker**



# Montageelektriker 2009

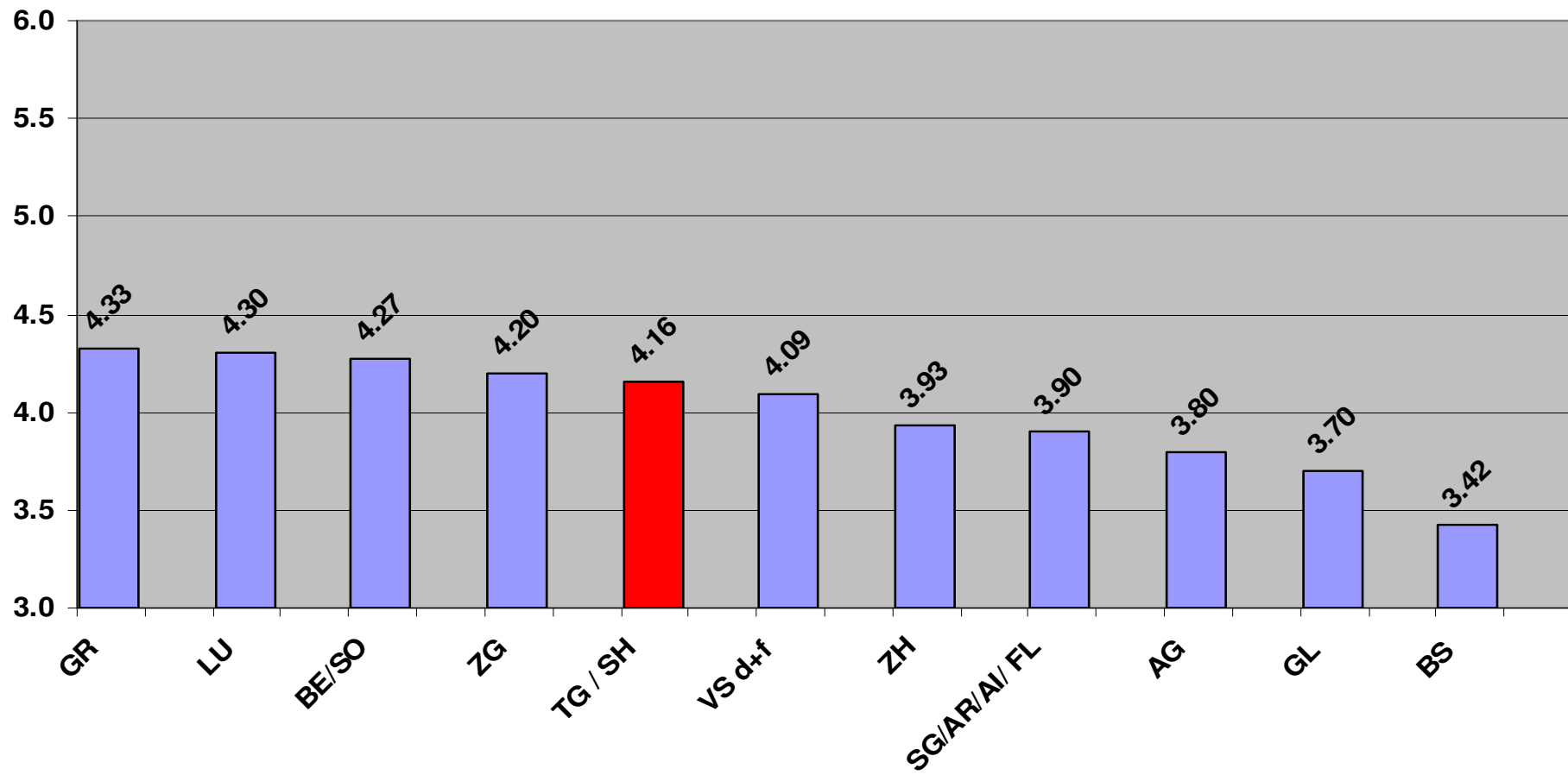
# Elektrotechnik

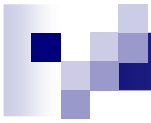




# Montageelektriker 2009

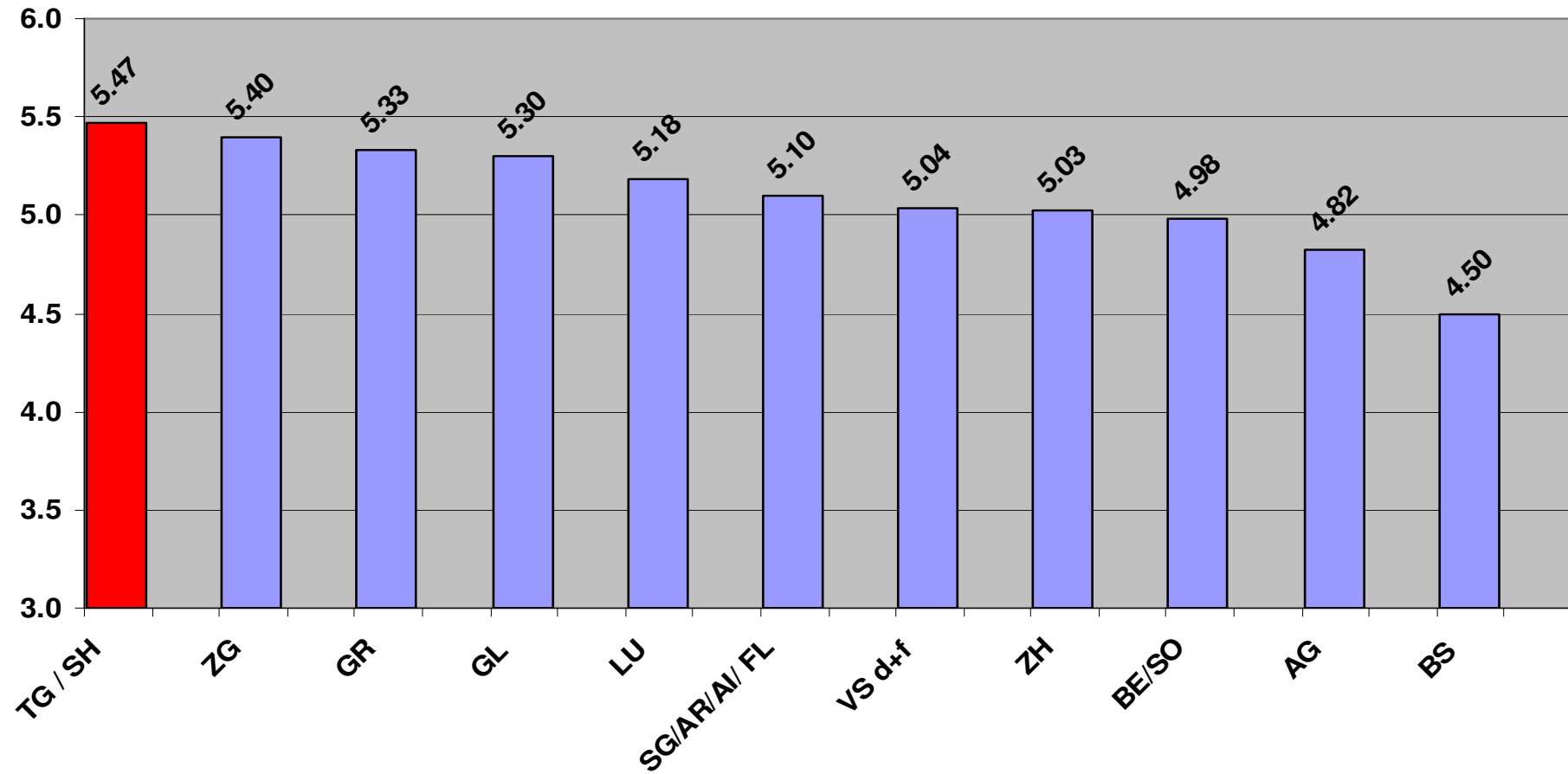
# Technische Normen

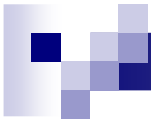




# Montageelektriker 2009

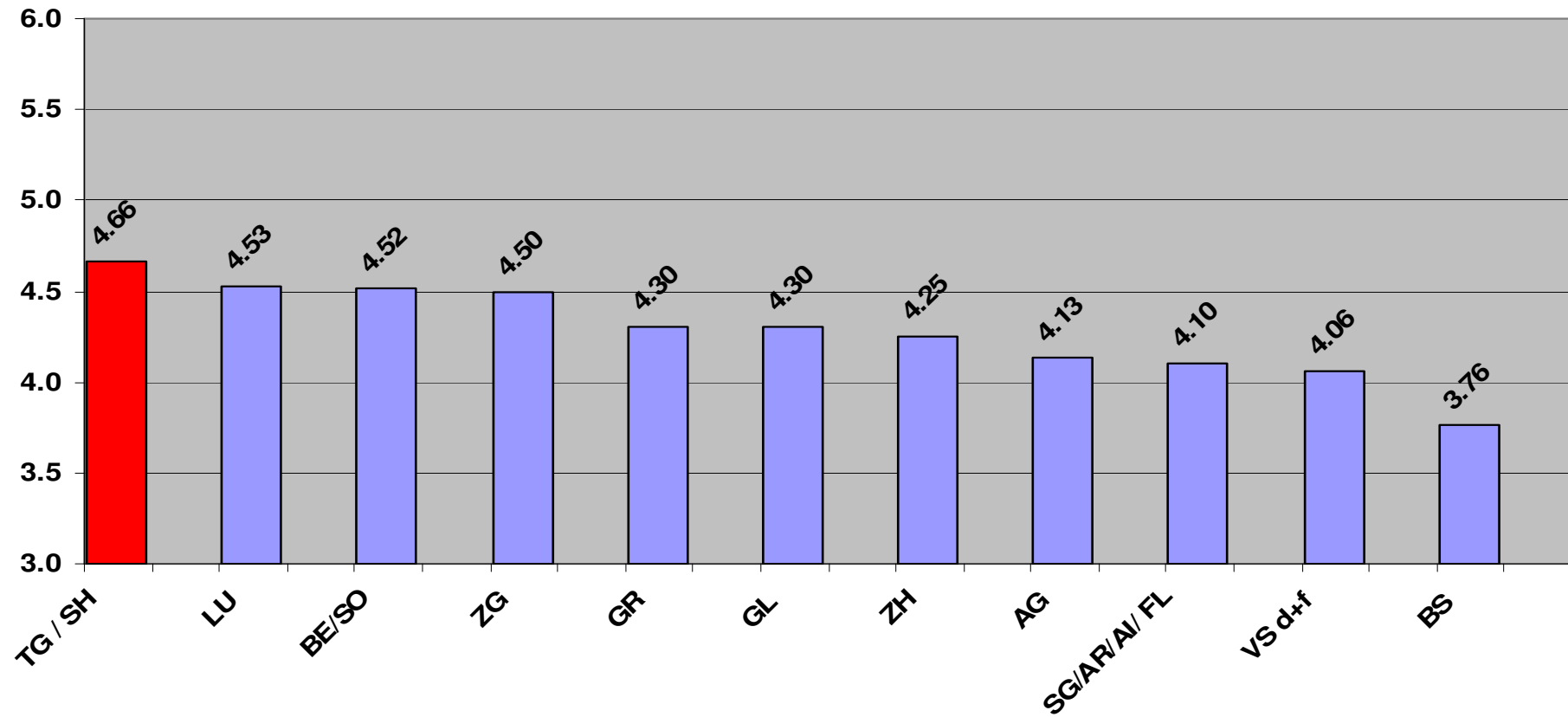
# Schemazeichnen

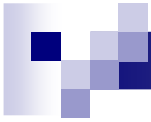




# Montageelektriker 2009

# Installationszeichen





# Montageelektriker

# Gesamtnote Berufskunde

